

# LEGEND

- Section corner
- Set 5/8" iron pin w/cap PLS 4045
- Found point, fnd 5/8" iron pin w/cap PLS 4045, or as shown
- PUE Public utility easement
- C1-C9 See curve table
- L1 See line table
- SET 5/8" IRON PIN W/CAP PLS 4045 IN CITY MONUMENT MALL

## UTILITY COMPANY APPROVAL

The utility easements as shown on this plat are hereby approved and accepted.

*12-8-93*  
*Sierra Pacific Power*  
*Control of Nevada*  
*12-8-93*  
*Southwest Gas Corporation*

## PLANNING COMMISSION APPROVAL

Approved and accepted by the Planning Commission of the City of Yerington, Lyon County, Nevada.  
 Dated this 13th day of December 1993.

*Robert M. Mearns*  
 CHAIRMAN

## CITY COUNCIL'S APPROVAL

Approved and accepted by the City Council of Yerington, Nevada at their official meeting on the 13th day of December 1993.

ATTEST: *Colleen V. Castello*  
 COLLEEN V. CASTELLO CITY CLERK



VICINITY MAP  
 not to scale

## BASIS OF BEARINGS

The bearings shown hereon are based on the West line of Section 23, as shown on Parcel Map recorded in file #155215 Lyon County Records. That bearing is N 00° 41' 53" E.

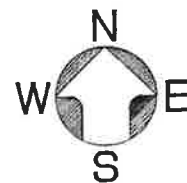
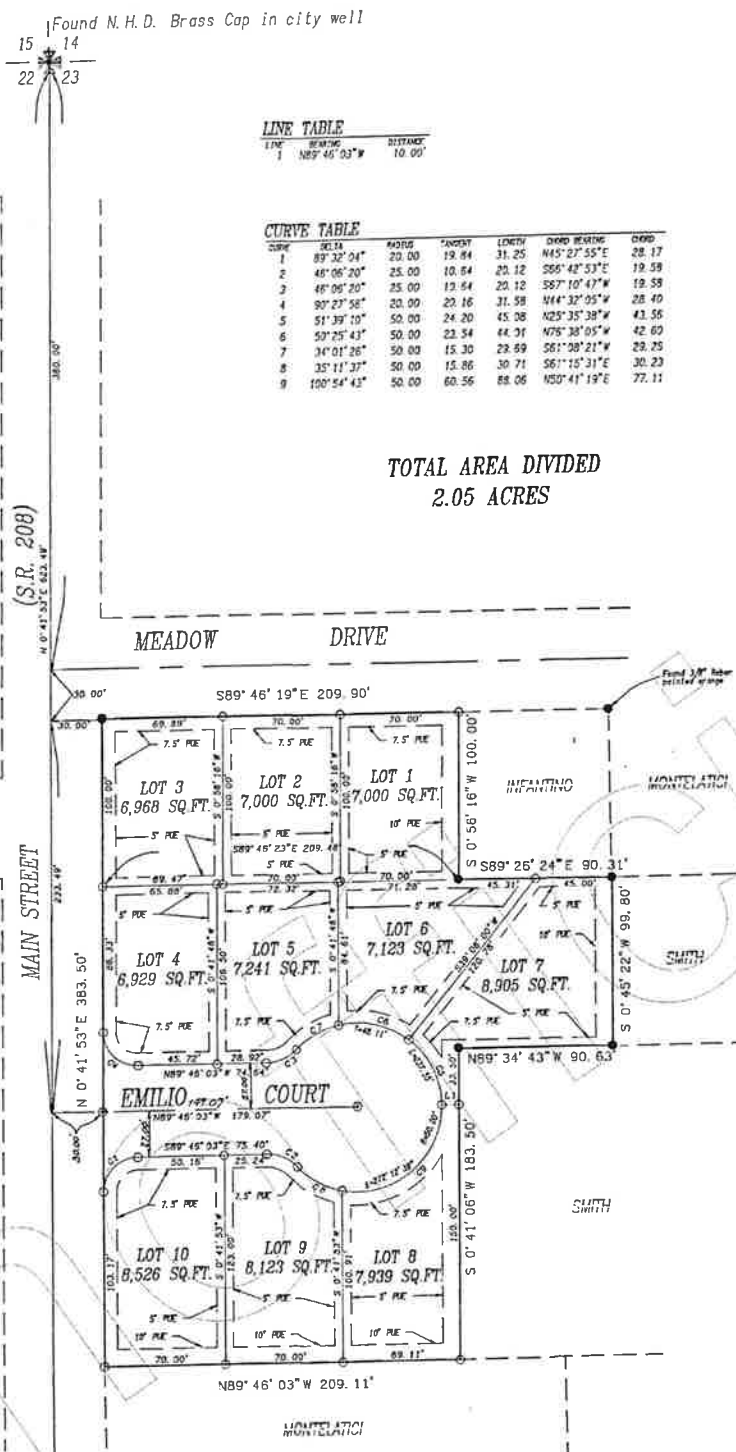
## LINE TABLE

LINE	BEARING	DISTANCE
1	N 89° 46' 03" W	10.00'

## CURVE TABLE

CURVE	BEARING	CHORD	CHORD BEARING	CHORD DISTANCE
1	89° 32' 04"	20.00	19.84	31.25
2	48° 06' 20"	25.00	10.64	20.12
3	48° 06' 20"	25.00	13.64	20.12
4	90° 23' 58"	20.00	20.16	31.58
5	51° 39' 10"	50.00	24.20	45.38
6	50° 25' 43"	50.00	23.54	44.31
7	34° 01' 26"	50.00	15.30	28.59
8	35° 11' 37"	50.00	15.86	30.71
9	100° 54' 43"	50.00	60.56	88.06

TOTAL AREA DIVIDED  
 2.05 ACRES



SCALE 1" = 50 FEET

## HEALTH DIVISION

This final map is approved by the Health Division of the Department of Human Resources, concerning sewage disposal, water pollution, water quality and water supply facilities in accordance with Nevada Revised Statutes. This approval predicated community water and community sewage disposal.

*12/14/93*  
 HEALTH DEPARTMENT DATE

## TITLE CERTIFICATE

The undersigned hereby certifies that this map has been examined and that the subdivider offering this map is the last record title holder of all the lands delineated thereon as of December 3, 1993.

*Northen Nevada Title Company*

STATE OF NEVADA SS  
 COUNTY OF LYON

On this 13th day of December, 1993

did personally appear before me, a notary public, *12/14/93*  
 who acknowledged they executed the above instrument.

*Linda Underbrieten*  
 NOTARY PUBLIC

## OWNERS' CERTIFICATE

The undersigned do hereby certify that they are the owners of the tract of land represented hereon, and do hereby consent to the preparation and recordation of this map and do hereby dedicate and set aside all easements as shown.

*Ray and Yolanda Aiazzi*  
 RAY AND YOLANDA AIAZZI TRUST

STATE OF NEVADA SS  
 COUNTY OF LYON  
 On this 27th day of November, 1993

did personally appear before me, a notary public, *Ray*  
*Aiazzi Yolanda Aiazzi* who acknowledged they executed the above instrument.

*Linda Underbrieten*  
 NOTARY PUBLIC

LINDA UNDERBRIETEN  
 Notary Public - State of Nevada  
 Appointment Recorded in Lyon County  
 MY APPOINTMENT EXPIRES FEB. 14, 1997

## SURVEYOR'S CERTIFICATE

- George H. Denson, a Professional Land Surveyor in the State of Nevada, certify that:
- This is a true and accurate representation of the lands surveyed under my supervision at the instance of Ray Aiazzi.
- The lands surveyed lie in the Northwest 1/4 of Section 23 Township 13 North, Range 25 East M. D. M. and was completed July 1, 1993.
- This plat complies with the applicable State statutes and any local ordinance.
- The monuments are of the character shown and occupy the positions indicated.

*12/14/93*  
 DATE 12/14/93 1993

## CITY ENGINEER'S CERTIFICATE

I hereby certify that I have examined this plat of a part of the NW 1/4 of Section 23, T. 13, N., R. 25, E., M. D. M. and am satisfied that it is technically correct.

*12-9-93*  
 DATE 12-9-93

## COUNTY CLERK'S CERTIFICATE

I, Marian Pinkerton, Lyon County Clerk/Treasurer hereby certify that there are no liens for unpaid state, county, city or local taxes or special assessments and that all taxes for the fiscal year have been paid on property the subject of this map.

*12-10-93*  
 DATE 12-10-93 MARIAN PINKERTON, LYON COUNTY CLERK/TREASURER

## DIVISION OF WATER RESOURCES

This final plat is approved by the Division of Water Resources of the Department of Conservation concerning water quantity, subject to the review of approval on file in this office.

*12-10-93*  
 DATE 12-10-93

## RECORDER'S CERTIFICATE

Filed for record at the request of *Northen Nevada Title Co.* on this 14th day of December, 1993 at 12 minutes past 3 o'clock P.M. in the official records of Lyon County, Nevada.

Fee \$38.50

FILE NO. 167037

PLAT OF  
**MEADOW PARK ADDITION**  
 A PORTION OF THE NORTHWEST 1/4  
 OF SECTION 23 TOWNSHIP  
 13 NORTH RANGE 25 EAST  
 MOUNT DIABLO MERIDIAN  
 CITY OF YERINGTON  
 LYON COUNTY, NEVADA

George H. Denson  
 SURVEYING & MAPPING  
 Yerington, Nevada  
 (702) 483-3811

LOB NO: 010410-22  
 DATE DRAWN: 08/31/93  
 DRAWN BY: KEN  
 CHECKED BY: G. H. D.

93-89

#167037 12/14/93